






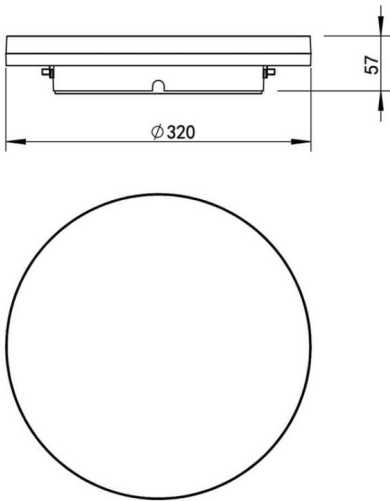
Rock down

| | |
|------------------|---|
| Código artículo | 86.SD07.2303.01 |
| Tipo de producto | Indoor |
| Categoría | Downlights de superficie |
| Familia | Rock |
| Subfamilia | Rock down |
| Pictograms | <div><div></div><div><div>220 240 V</div><div></div><div><div>CRI 80</div><div></div></div><div><div>50000h L80B10</div></div></div></div> |

Dimensions

Product dimensions (mm) Ø320xH57mm

Esquema



| | |
|------------------------------|----------------|
| Producto | |
| Potencia real (W) | 10/15/20 |
| Flujo luminoso real (lm) | 1200/1800/2400 |
| Eficacia luminosa (lm/W) | 120 |
| Ángulo de apertura | 105,5º |
| IP | 54 |
| Equipo | DALI |
| Power Factor | >0,9 |
| Temperatura de color (K) | 3000/4000/6000 |
| Consistencia de color (SDCM) | SDCM<3 |
| CRI | >80 |
| IK | IK10 |